

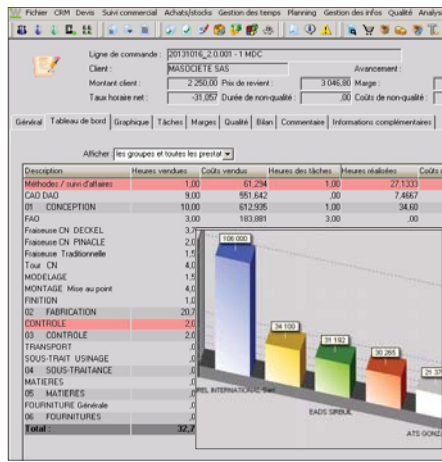
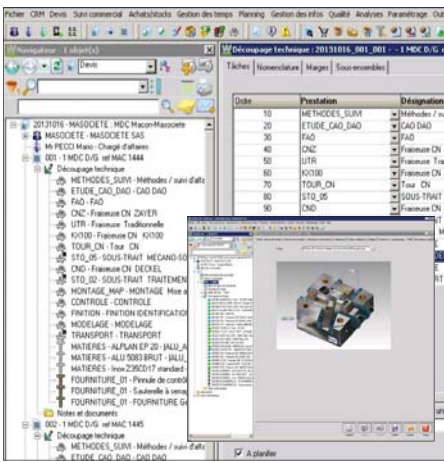
workplan

Solutions



www.workplan.com

SAP® Certified
Integration with SAP Applications



Qts	Unité	Commande	Label	Description	Prestation	Date de réalisation prévue
23.00	100_CDR	#1377	100_CDR.0.001	Echecur standard - EJE	FOURNITURE_01	25/07/2011
6.00	100_CDR	#0215	100_CDR.0.001	FOURNITURE Générale	FOURNITURE_01	00/00/0000
6.00	100_CDR	#0313	100_CDR.0.001	Aléas de STUB - DR - J	FOURNITURE_03	31/09/2011
200.00	100_CDR	#0445	100_CDR.0.001	Visserie divers stand	FOURNITURE_01	00/00/0000
500.00	100_CDR	#0446	100_CDR.0.001	Visserie divers stand	FOURNITURE_01	00/00/0000
200.00	100_CDR	#0447	100_CDR.0.001	Visserie divers stand	FOURNITURE_01	00/00/0000
200.00	100_CDR	#0448	100_CDR.0.001	Visserie divers stand	FOURNITURE_01	00/00/0000
1.00	100_CDR	#0125	100_CDR.0.001	Goujons - file de 200 gr	FOURNITURE_01	15/08/2011
1.00	100_CDR	#0126	100_CDR.0.001	Goujons - file de 195 gr	FOURNITURE_01	15/08/2011
2.00	100_CDR	#0211	100_CDR.0.001	Goujons - file de 195 gr	FOURNITURE_01	14/09/2011
21.00	100_CDR	#0212	100_CDR.0.001	Goujons - file de 195 gr	FOURNITURE_01	14/09/2011
400.00	100_CDR	#0213	100_CDR.0.001	Goujons - file de 195 gr	FOURNITURE_01	14/09/2011
50.00	100_CDR	#0214	100_CDR.0.001	Visserie divers stand	FOURNITURE_01	14/09/2011
10.00	100_CDR	#0215	100_CDR.0.001	Visserie divers stand	FOURNITURE_01	14/09/2011
10.00	100_CDR	#0216	100_CDR.0.001	Visserie divers stand	FOURNITURE_01	14/09/2011
2.00	102_CDR	#10402	102_CDR.0.001	Platelage alu	FOURNITURE_01	28/09/2011
80.00	001_CDR	#1254	001_CDR.0.001	Disque alu - F26 1	FOURNITURE_03	22/09/2011
10.00	100_CDR	#1255	100_CDR.0.001	Disque alu - F26 1	FOURNITURE_01	00/00/0000
10.00	100_CDR	#1256	100_CDR.0.001	Disque alu - F26 1	FOURNITURE_01	00/00/0000
300.00	100_CDR	#1257	100_CDR.0.001	Disque alu - F26 1	FOURNITURE_01	17/10/2011
200.00	100_CDR	#1258	100_CDR.0.001	Disque alu - F26 1	FOURNITURE_01	17/10/2011
100.00	100_CDR	#1259	100_CDR.0.001	Disque alu - F26 1	FOURNITURE_01	17/10/2011
2.00	100_CDR	#1260	100_CDR.0.001	Disque alu - F26 1	FOURNITURE_01	00/00/0000
2.00	100_CDR	#1261	100_CDR.0.001	Disque alu - F26 1	FOURNITURE_01	00/00/0000
10.00	100_CDR	#1262	100_CDR.0.001	Disque alu - F26 1	FOURNITURE_01	00/00/0000
2.00	102_CDR	#2046	102_CDR.0.001	Platelage alu	FOURNITURE_03	00/00/0000
1.00	102_CDR	#2047	102_CDR.0.001	Platelage alu	FOURNITURE_03	00/00/0000
30.00	102_CDR	#2048	102_CDR.0.001	Platelage alu	FOURNITURE_03	00/00/0000

QUOTATIONS

Quickly prepare your technical quotes.

Interface with WorkXplore 3D, Excel spreadsheet.

Tender versioning management.

Capitalize on existing data thanks to Technical Criteria.

Automatic conversion of Quotes into Sales Orders.

- Rapidity, reactivity, reliability and precision
- Automation, centralization of technical data
- Optimize your profit margins

SALES ACTIVITY MANAGEMENT

Progress from the Sales Order through to the Customer Invoice in just a few mouse clicks.

Easily store and recover all project associated documents.

Increase profitability on jobs.

Decision aid tools, job summaries.

- Sales Administration
- Real time project summary
- Document Dematerialization

PURCHASING - STOCKS

Automate and import CAD Bills of Materials (Catia V5®, Catia V4®, Pro/E®, VISI®)

Real time stock supply reports for all current projects.

Multi-stock Management and Component Traceability.

- Simplified purchasing procedures
- Production cost control
- Stock optimization

MAXIMIZE YOUR



PRODUCTION MANAGEMENT

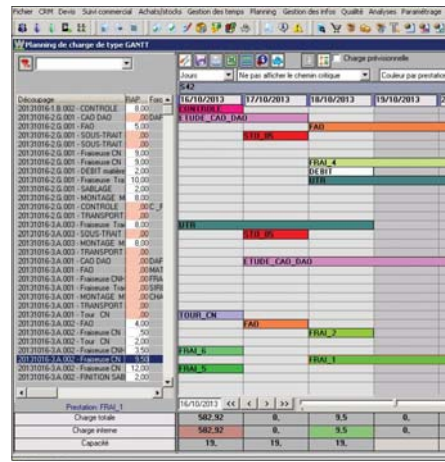
Manage time spent on your projects either by manual data inputting, bar code readers or touch screens.

MytimeManagement : complete software solution for managing employee presence times, activities...

Carry out machinery and equipment maintenance, schedule maintenance operations and measuring equipment calibration programs.

Obtain up-to-the-minute information about absences, machine capacities, sub-contracted component statuses, outstanding workshop operation times.

- Production progress and flexibility
- Workshop visualization and supervision



PLANNING

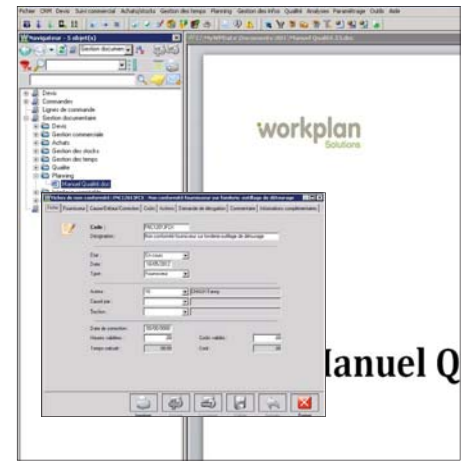
Simulate completion deadlines according to workload.

Prioritize projects according to constraints.

Validate customer delivery deadlines.

Possibility of interfacing the application with detailed and advanced Planning software.

- Rapid workload analysis and visualization
- Optimize your resources
- Export to MS project or Excel



QUALITY

Non-conformity sheet, actions and derogation request management.

Resource and measuring equipment maintenance.

Quality associated document (quality control manuals, standards, etc.) management, centralization and distribution

- Continual improvement of internal processes
- Supplier evaluation according to customized criteria
- Evaluation and analysis of non-quality costs
- Integrated quality improvement program

KNOW-HOW

TOOLS & ANALYSIS

Opportunity qualification.

Sales and Marketing Campaigns.

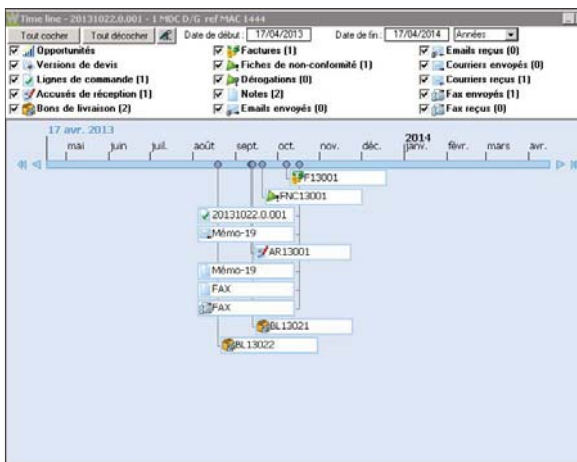
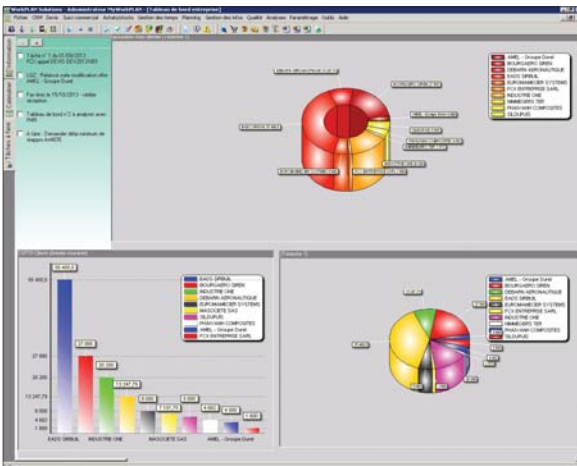
Opportunity management and follow up.

Customizable home page.

Addition of notes and memos to your projects.

Send e-mails or PDF documents directly from the application.

- **Timeline: activity summary**
- **Control actions over time**
- **Optimize cash flow**
- **Screens, alarms and notes customized per user**



The interface shows a 'Note' form with fields for 'Auteur', 'Références', 'Date de création', 'Catégorie', 'Type', 'Code', 'Libellé', 'Fichier', 'Etat', 'Début', 'Fin', 'Diffusion', and 'Commentaire'. A 'Mmo-19' form is also visible, with fields for 'Mmo public', 'FCX: Envoyer le document de présentation à M.Pecci sur l'adresse pecci.mario@masociete.sas.fr', and 'Alarme'.

And much more ...

Vero Software

50 Boulevard du Général de Gaulle -71009 Mâcon Cedex - France

Tel : (+33) (0)3 85 21 66 21 | Web : www.workplan.com | Email : communication@veroftware.com